

Equivalent lengths – m and cm

1 There are 100 centimetres (cm) in 1 metre (m).
Use the bar models to complete the sentences.

1 m
100 cm

a)

1 m	1 m	1 m

There are cm in 3 m.

b)

1 m	1 m	1 m	1 m	1 m	1 m

There are cm in 6 m.

c)

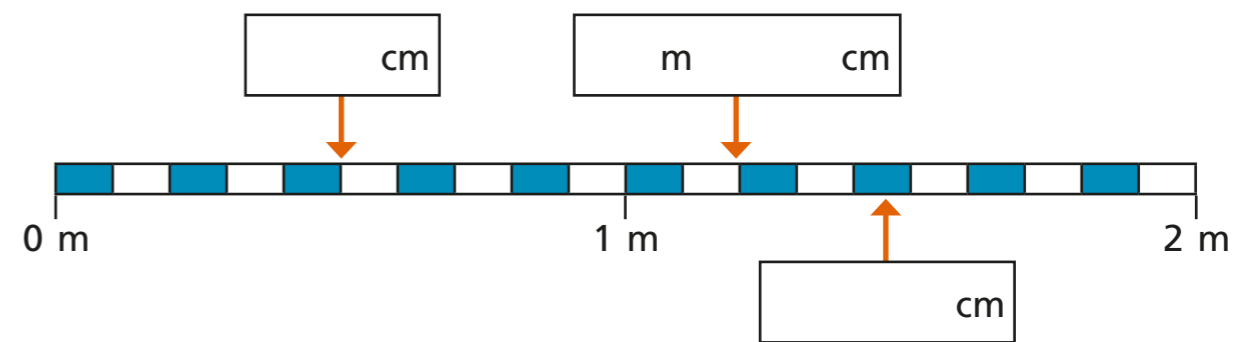
100 cm	100 cm	100 cm	100 cm	100 cm

There are 500 cm in m.

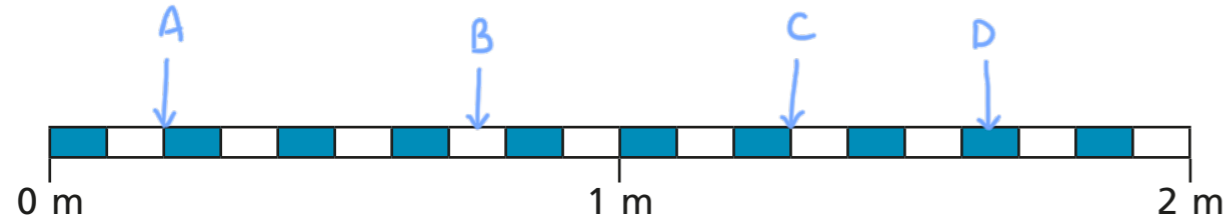
2 Complete the table to show equivalent lengths and continue the pattern.

cm	m and cm
310 cm	3 m and 10 cm
320 cm	m and cm
330 cm	m and cm
cm	3 m and 40 cm
cm	3 m and 50 cm
cm	m and cm
cm	m and cm

3 Write the missing measurements.

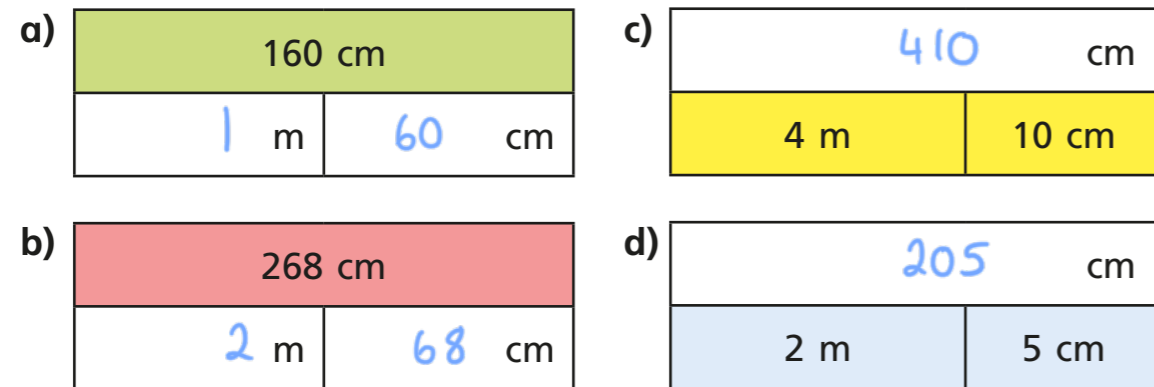


- 4 Draw an arrow to show the position of each measurement.



A	B	C	D
20 cm	0 m 75 cm	130 cm	1 m 65 cm

- 5 Complete the bar models.



- 6 Complete the sentences.

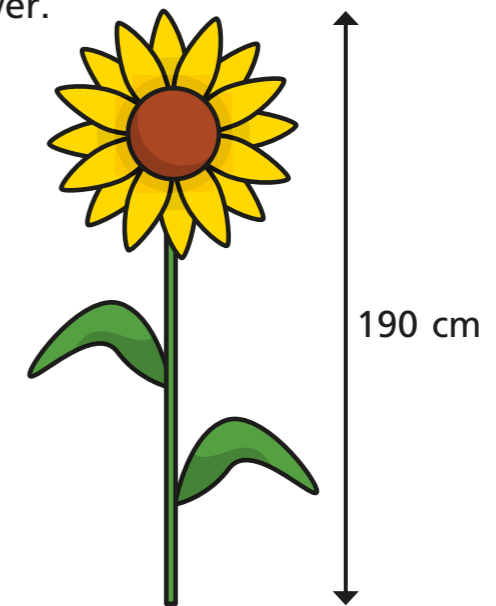
- a) 240 cm = m and cm
- b) 319 cm = m and cm

c) 508 cm = m and cm

d) 2 m and 15 cm = cm

e) 8 m and 3 cm = cm

- 7 Here is Huan's sunflower.



Dani's sunflower is 2 m and 30 cm.

Tom's sunflower is exactly halfway between Huan's and Dani's.

How tall is Tom's sunflower?

Write your answer in metres and centimetres.

m and cm

